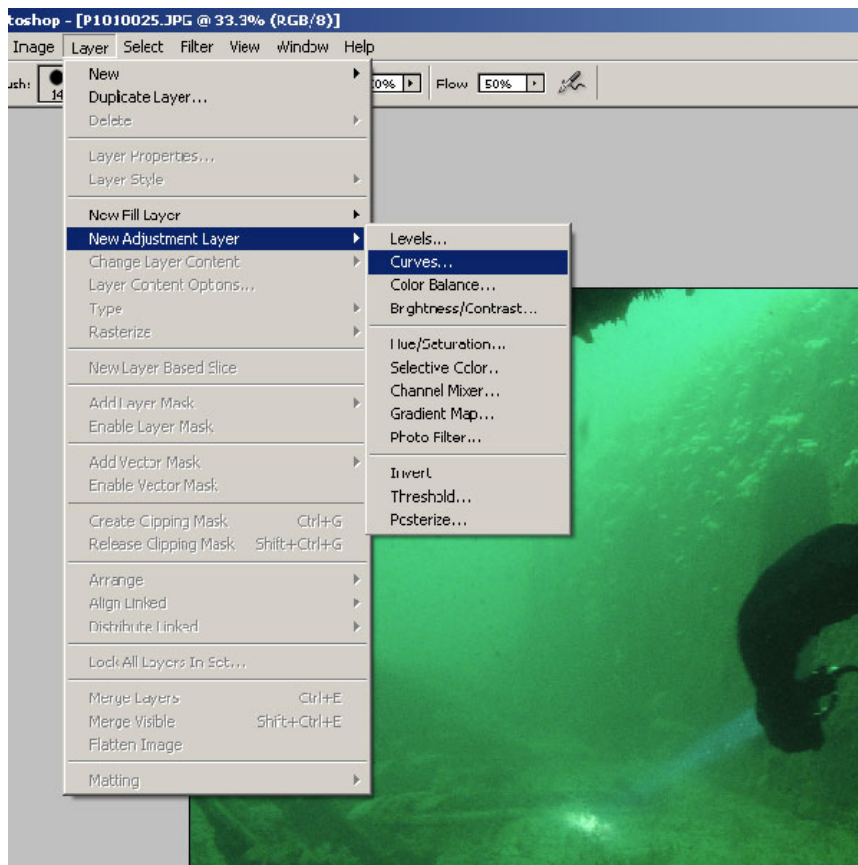


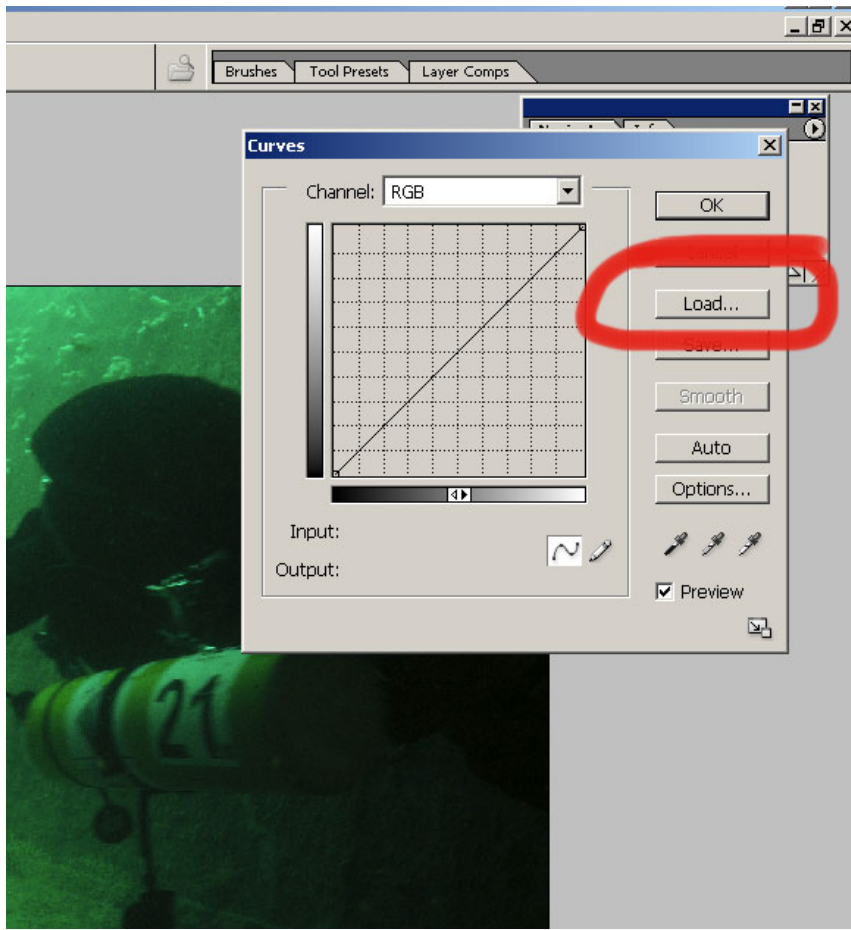
Colour Correcting Deep Green Water

First start with your 'green image', this was on the Persier, Plymouth (30m) just next to the prop shaft swim through, where a plate has fallen over.



Next load a curve, it is best use Layers in Photoshop as you can always turn them off and you don't change the original file (as long as you save the file as something else).

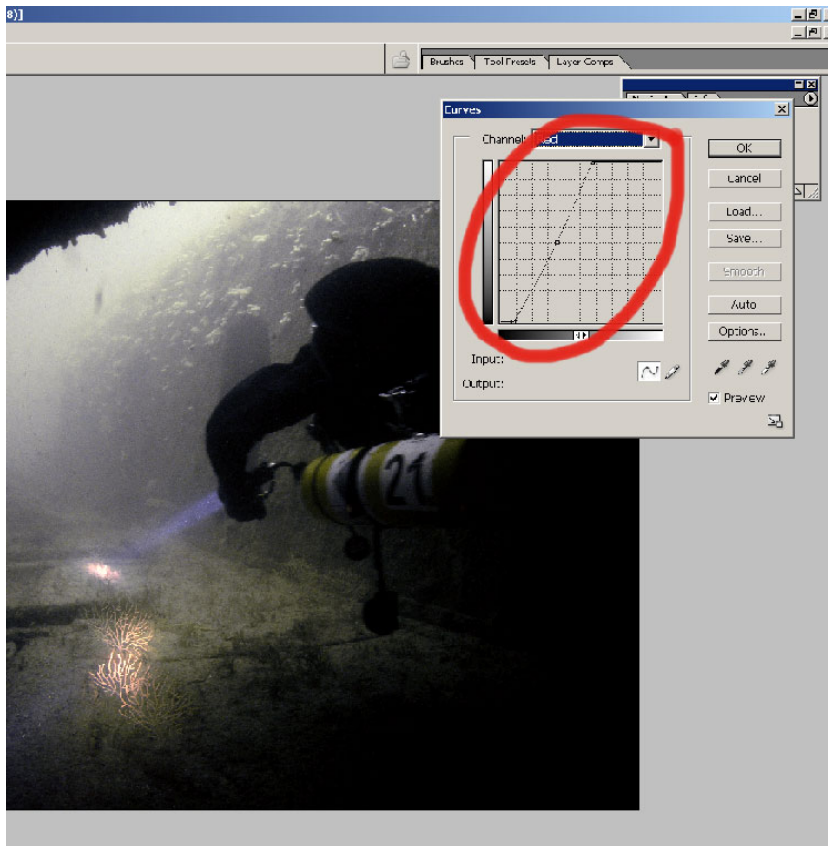




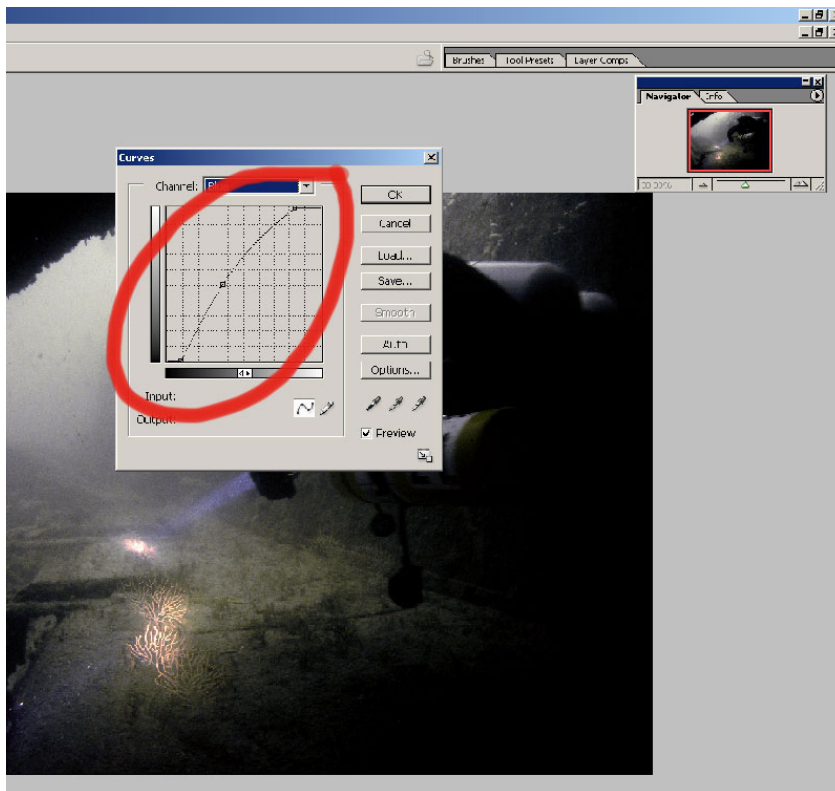
The curve is here http://www.imagesoflife-online.co.uk/Teaching/deep_green_water.acv just right click and 'Save As' and save it in the normal curves folder (C:Program Files/Adobe/Photoshop CS/Presets/Curves) and then load it from that folder when you follow the step above.

The curve adjusts the proportions of Red, Green and Blue. I created this curve by using the 'White' Eyedropper on the MOD sticker of Rob's cylinder and then tweaking it slightly moving the balance of the curves as shown below. Just left click on a point on the curve and move it, little movements sometimes have big effects.

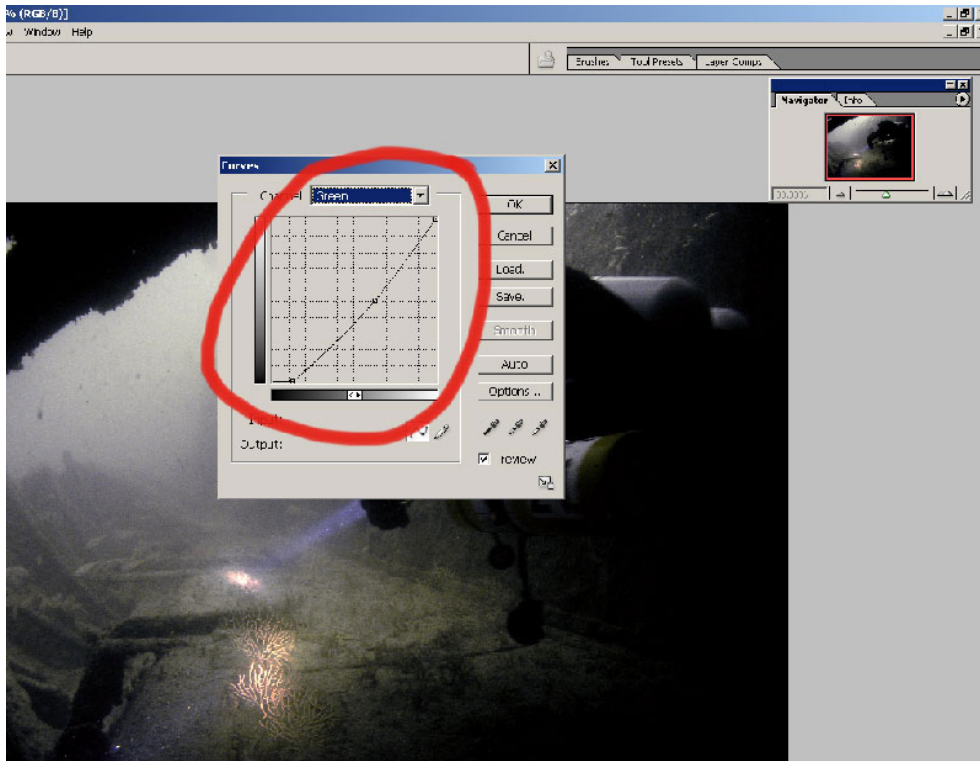
Red Curve



Blue Curve



Green Curve



Most of my Photoshop stuff has been learned from trial and error although the thing I used to tell students I taught in a digital monochrome class was have a play, as long as you have an original file somewhere else, doesn't matter what you do, you will learn more by experimenting than reading books.

This curve works on other images which I have taken in bright sunshine at 30m in the UK, if it doesn't work for you "straight of the box", have a play with the curves...